



# GAT MONTHLY MEMBERSHIP PROGRESS REPORT

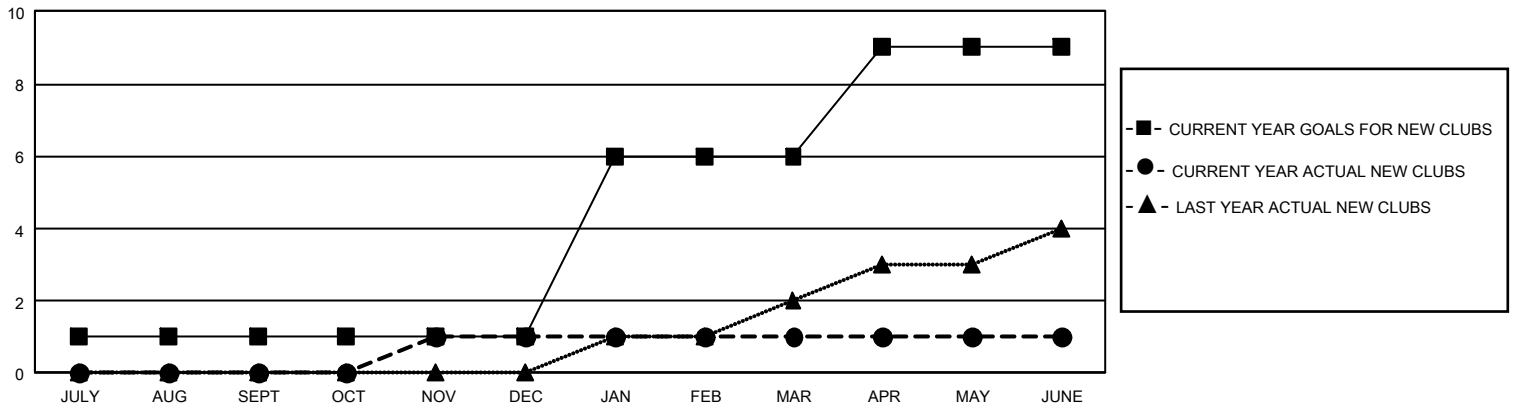
Results as of: 6/30/2025

## GMT Constitutional Area 2, Group C

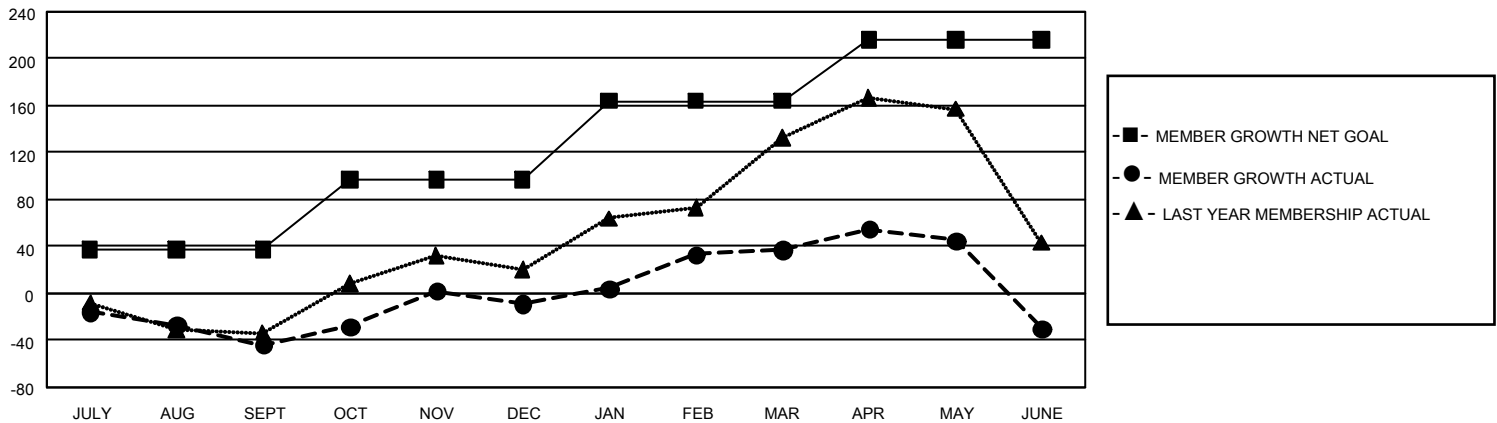
REPORT DOES NOT INCLUDE CLUBS IN UNDISTRICTED AREAS.

Clubs				Members			
RESULTS FOR 2024-2025				RESULTS FOR 2024-2025			
QUARTER	NEW CLUB GOAL	NEW CLUBS	DROPPED CLUBS	QUARTER	MEMBER GROWTH NET GOAL	MEMBER GROWTH ACTUAL	DROPPED MEMBERS ACTUAL (including transfers)
JULY/AUG/SEPT	3	0	1	JULY/AUG/SEPT	37	56	92
OCT/NOV/DEC	0	1	2	OCT/NOV/DEC	60	140	84
JAN/FEB/MAR	15	0	0	JAN/FEB/MAR	67	106	51
APR/MAY/JUNE	9	0	0	APR/MAY/JUNE	52	107	166

GOALS AND ACTUAL NEW CLUBS CUMULATIVE



GOALS AND ACTUAL MEMBERS CUMULATIVE



DROPPED CLUBS: 3

100 CLUBS OF 152 ADDED 1 OR MORE NEW MEMBERS

### GENDER DISTRIBUTION

MALE	2,095 (62.35%)
FEMALE	1,260 (37.50%)
NON BINARY	1 (0.03%)
PREFER NOT TO ANSWER	4 (0.12%)

### DROPPED MEMBERS

DECEASED	38
CLUB CANCELLED	9
OTHER	341
<b>TOTAL</b>	<b>388</b>

[CLICK HERE FOR CUMULATIVE MEMBERSHIP DATA](#)

TOTAL FAMILY UNIT MEMBERS	632
FAMILY MEMBERS PAYING HALF DUES	323